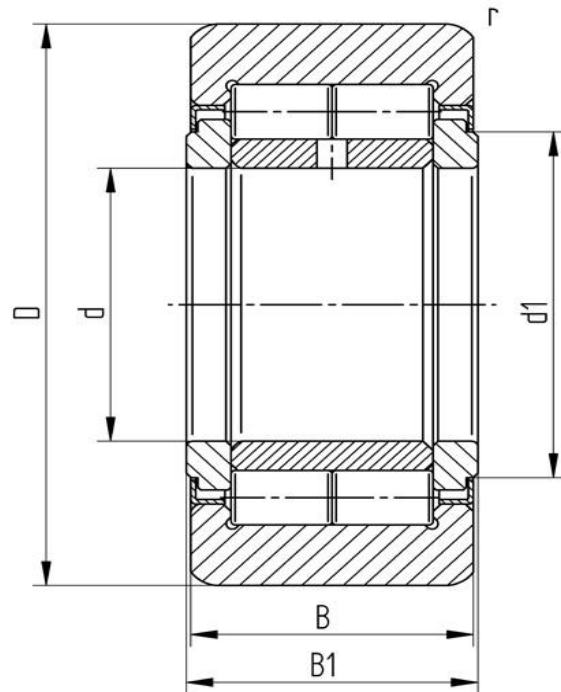


## Data sheet

### Support roller NUTR 45 100 (crowned, with axial guidance, labyrinth seal)

Designation	NUTR 45 100
Type	crowned
D [mm]	100
d [mm]	45
d1 [mm max.]	55
B1 [mm]	32
B [mm]	30
r [mm]	1,1
r1 [mm]	0,6
Dynamic load Crw[N]	72000
Static load	10800
Speed limit [min-1]	1400



Every specification has been edited and verified carefully. STI Bearings GmbH assumes no liability for potential errors or incompleteness. Technical modifications are subject of changes.  
© 2020 by STI Bearings GmbH  
Reproduction, even excerpts, only with our approval.